



SITE-SCALE RESTORATION PLANNING ON THE LOWER VIRGIN RIVER, NEVADA

MORMON MESA CASE STUDY

B. Orr, T. Dudley, E. Bickmore, R. Vaghini, A. Lambert, G. Leverich

CLARK COUNTY VIRGIN RIVER RESERVE UNIT 1

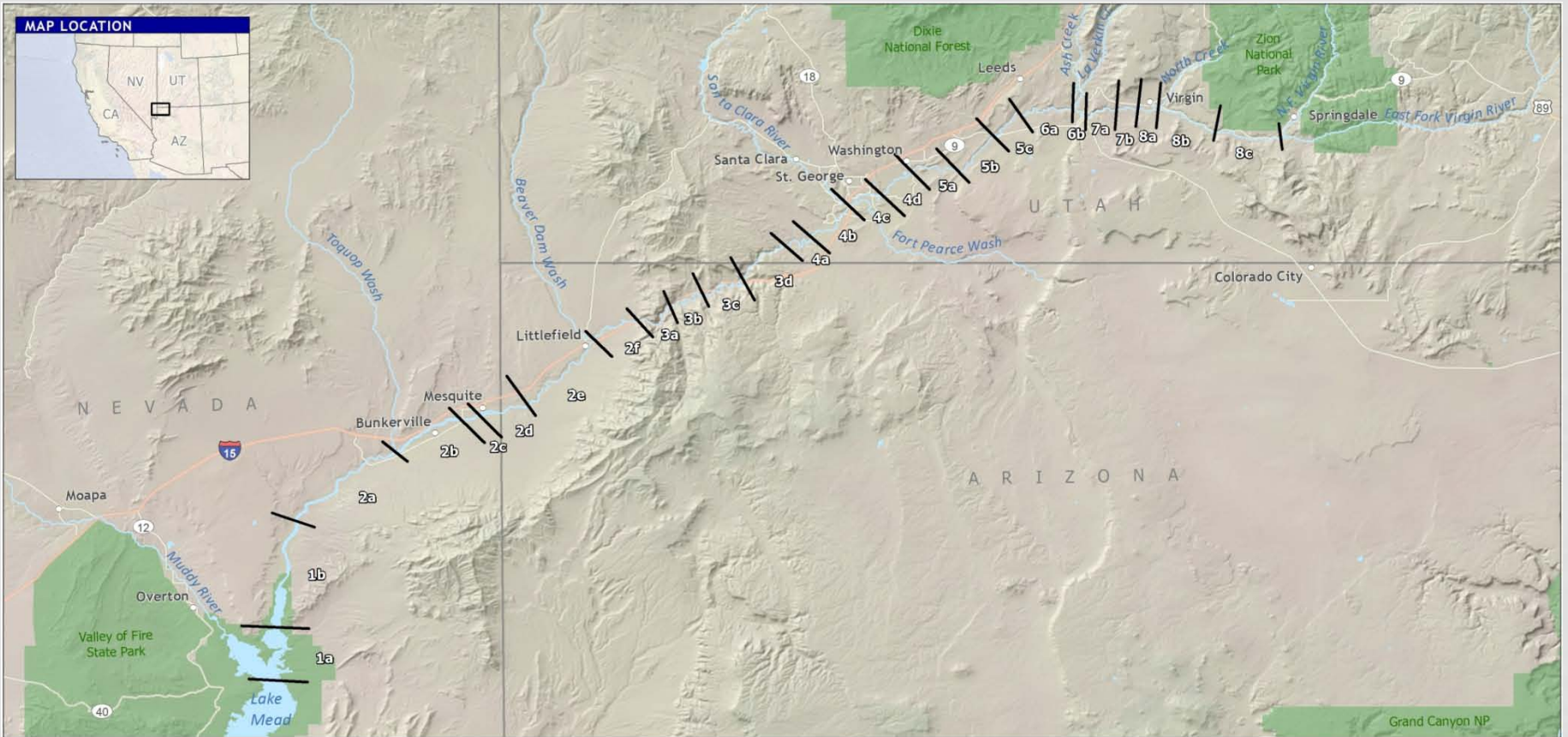
- Goal: Develop a restoration plan to enhance and expand existing habitat for the SWFL and other MSHCP covered riparian birds
- 80 acre parcel
 - Existing Vegetation: Dense Tamarisk, scattered Goodding's willow and a few other natives



Project Partners

- Clark County Desert Conservation Program
- Great Basin Institute
- Partners in Conservation
- Stillwater Sciences
- UC Santa Barbara
- Walton Family Foundation

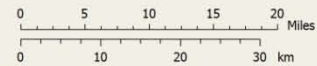
VIRGIN RIVER



VIRGIN RIVER: HYDROGEOMORPHIC REACHES

|| Hydrogeomorphic Reach

Data sources:
 Hydrogeomorphic Reaches: Stillwater Sciences, 2012
 Streams, Highways, Parks, State boundaries: ESRI 2010
 Hillshade Tint: Natural Earth, 2010



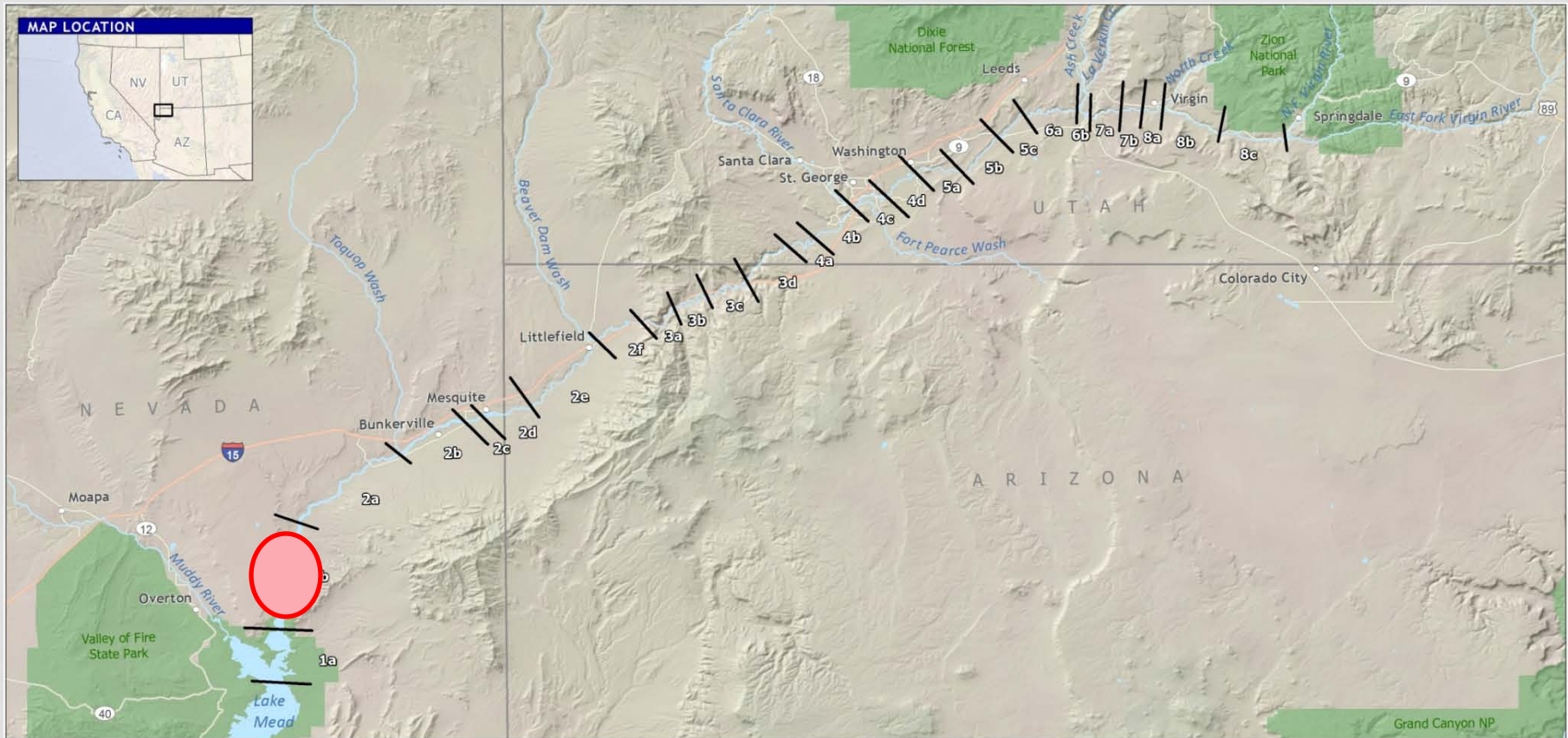
CONCLUSIONS FROM PHASE 1 ASSESSMENT

- **Hydro-geomorphology:** Virgin River is an episodic system prone to large, channel-resetting floods
- **Vegetation:** tamarisk dominated in lower river and greater riparian diversity in upper river – ***but vegetation will change*** with defoliation and mortality from leaf beetle
- **Potential Active Restoration Sites:**
 - Lower River = 3,480 acres—expansive with greater continuity, co-occurrence with SWFL, opportunities on public lands
 - Upper River = 665 acres—smaller, isolated areas
- **Phase 2:** plan and implement site-specific restoration projects



VIRGIN RIVER

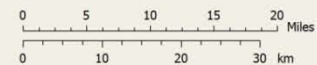
STUDY AREA: MORMON MESA REACH



VIRGIN RIVER: HYDROGEOMORPHIC REACHES

\\ Hydrogeomorphic Reach

Data sources:
 Hydrogeomorphic Reaches: Stillwater Sciences, 2012
 Streams, Highways, Parks, State boundaries: ESRI 2010
 Hillshade Tint: Natural Earth, 2010



Active channel frequency (5 year scenario)

- <20%
- 20 - 40%
- 40 - 60%
- 60 - 80%
- >80%

Active channel frequency (3 year scenario)

- >70%
- 30-70%
- <30%

Potential priority areas for active restoration

Existing/proposed restoration site

Public ownership

Southwestern willow flycatcher habitat

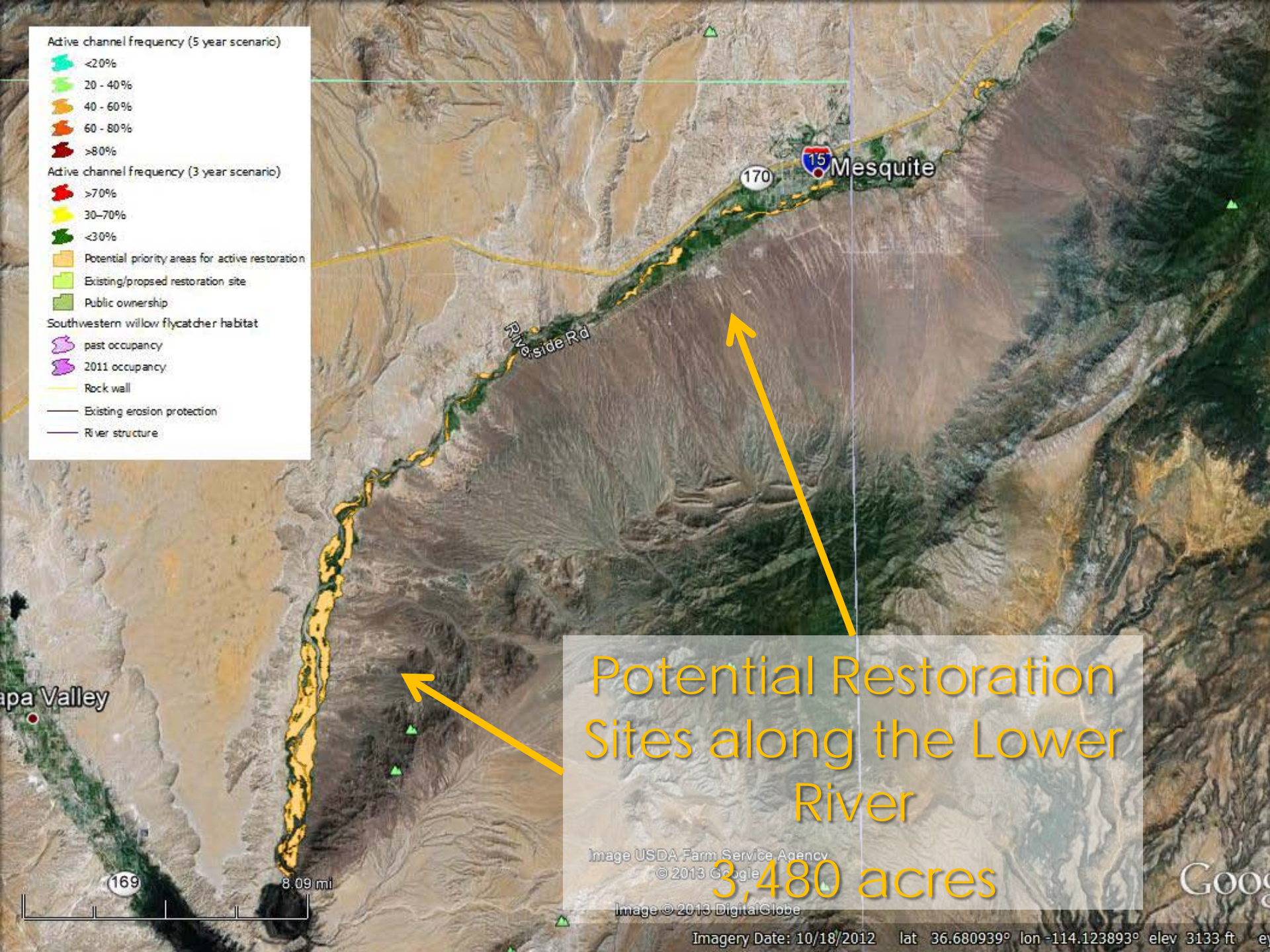
past occupancy

2011 occupancy

Rock wall

Existing erosion protection

River structure



Potential Restoration Sites along the Lower River

3,480 acres

Image USDA Farm Service Agency
© 2013 Google

Image © 2013 DigitalGlobe

Active channel frequency (5 year scenario)

- <20%
- 20 - 40%
- 40 - 60%
- 60 - 80%
- >80%

Active channel frequency (3 year scenario)

- >70%
- 30-70%
- <30%

Potential priority areas for active restoration

Existing/proposed restoration site

Public ownership

Southwestern willow flycatcher habitat

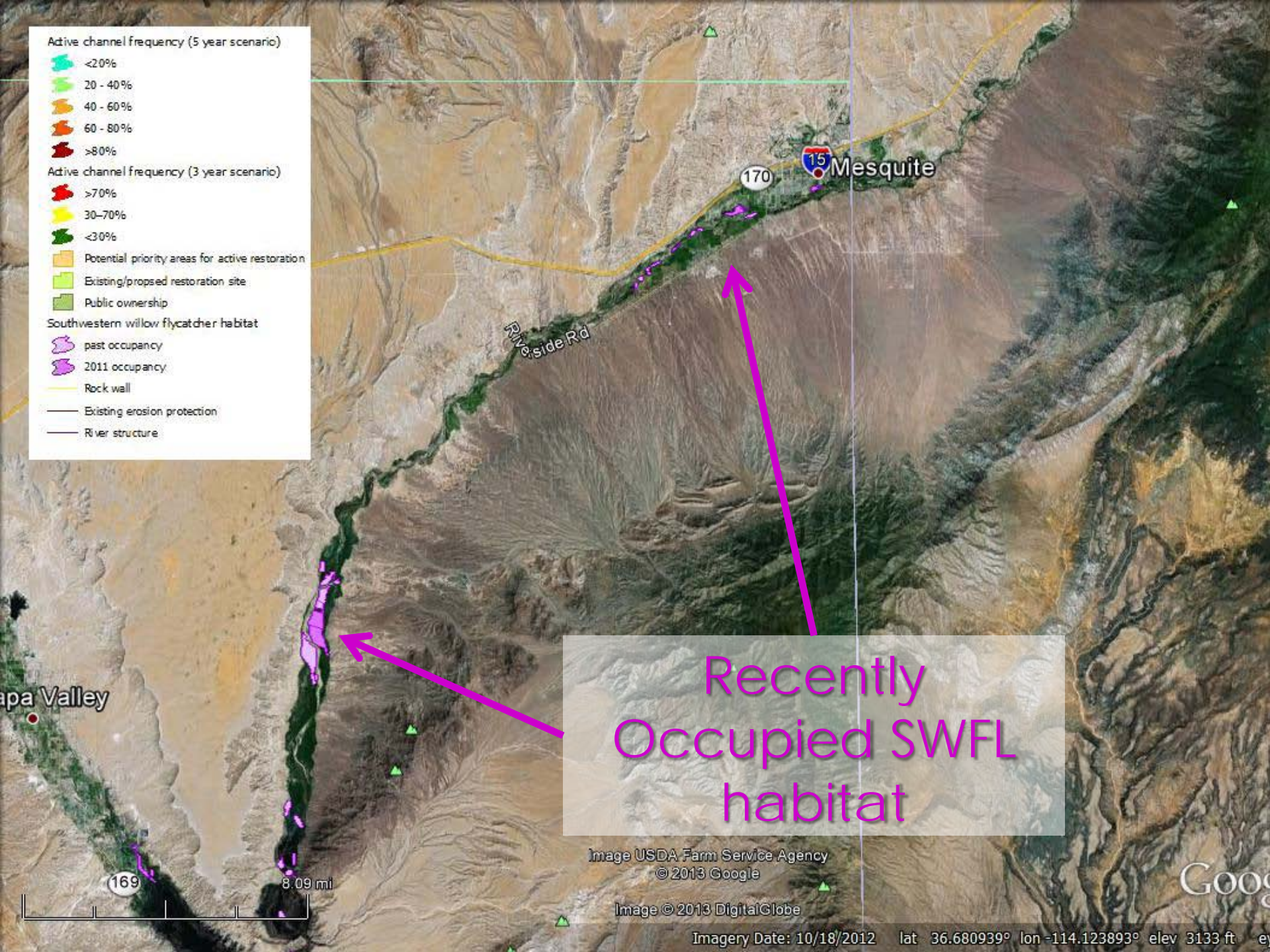
past occupancy

2011 occupancy

Rock wall

Existing erosion protection

River structure



Recently Occupied SWFL habitat

Image USDA Farm Service Agency
© 2013 Google

Image © 2013 DigitalGlobe

Imagery Date: 10/18/2012 lat 36.680939° lon -114.123893° elev 3133 ft

Active channel frequency (5 year scenario)

- <20%
- 20 - 40%
- 40 - 60%
- 60 - 80%
- >80%

Active channel frequency (3 year scenario)

- >70%
- 30-70%
- <30%

Potential priority areas for active restoration

Existing/proposed restoration site

Public ownership

Southwestern willow flycatcher habitat

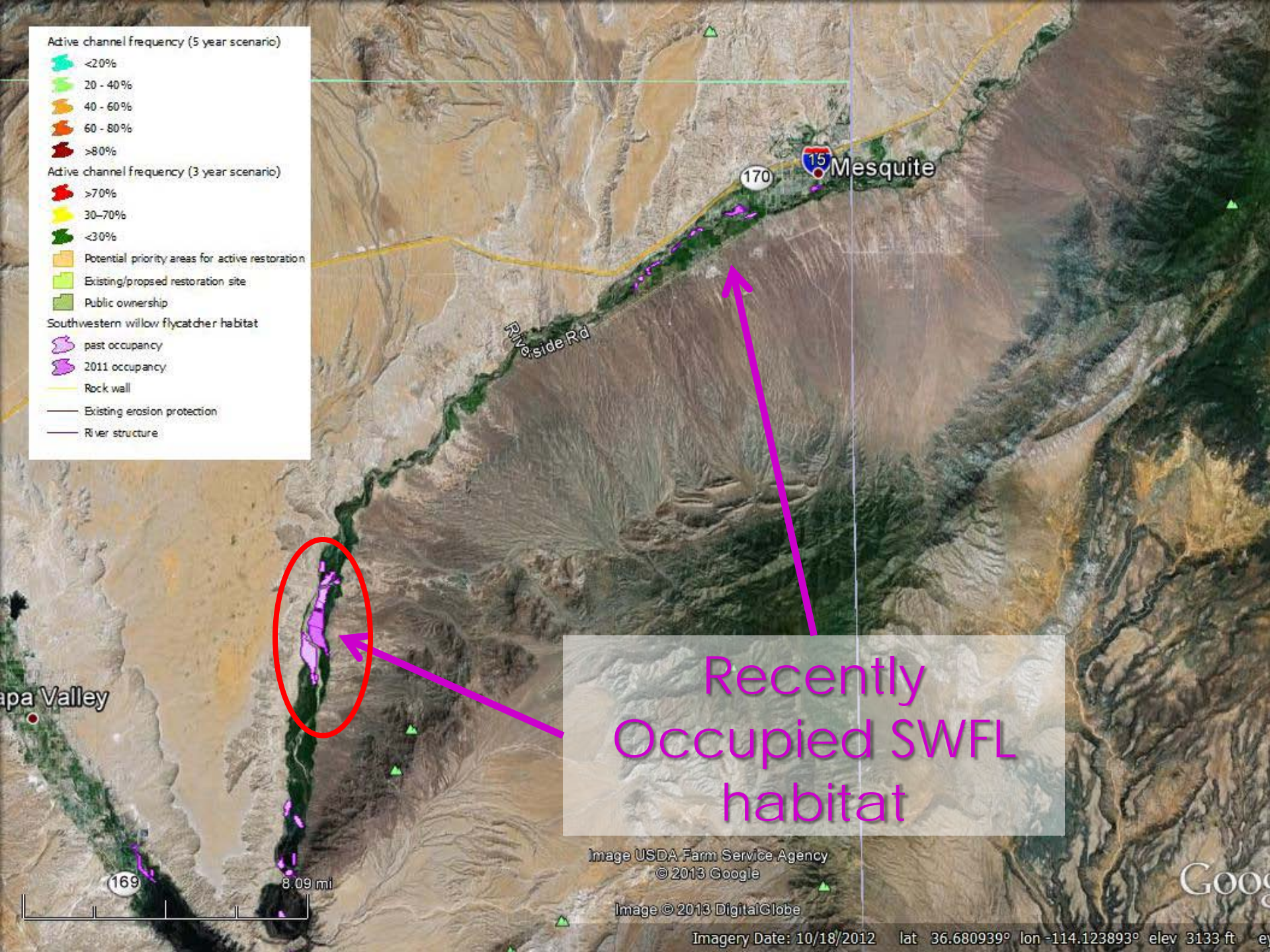
past occupancy

2011 occupancy

Rock wall

Existing erosion protection

River structure



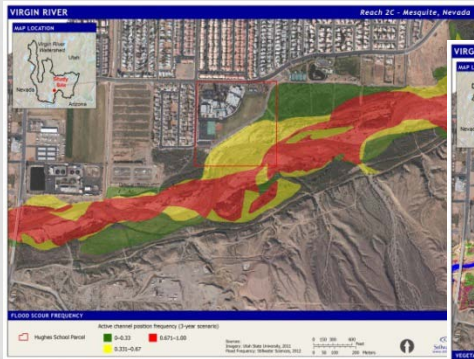
Recently Occupied SWFL habitat

Image USDA Farm Service Agency
© 2013 Google

Image © 2013 DigitalGlobe

Imagery Date: 10/18/2012 lat 36.680939° lon -114.123893° elev 3133 ft

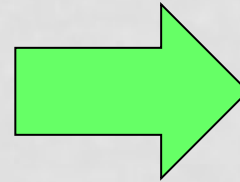
PHASE 2: REFINE PRIORITY AREAS FOR ACTIVE RESTORATION



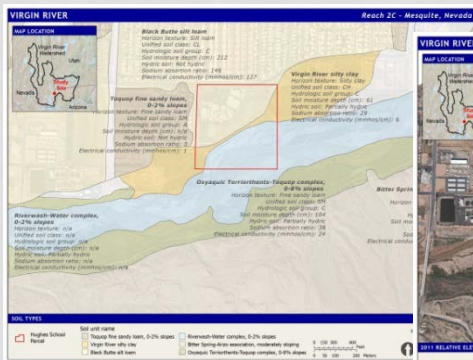
Flood Reset Zone
(>33% frequency)



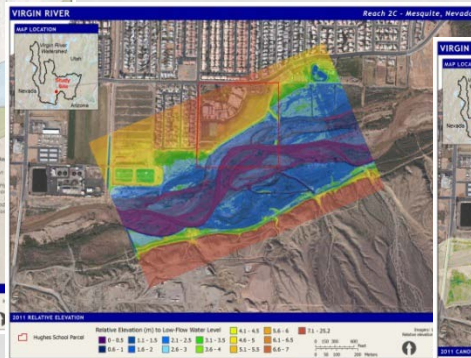
Vegetation Types
(% native vs tamarisk)



Phase 1: Potential
Restoration Areas



Soils



Depth to Groundwater
(Relative Elevation)



Vegetation Structure



SWFL Habitat

Phase 2: Refinement Using Reach- and Site-scale Data

CLARK COUNTY VIRGIN RIVER UNIT 1 INITIAL PHASE

Ecohydrological Assessment

- Reach- and site-scale assessment
- Relative elevation mapping
- Vegetation canopy height
- GIS analysis for identification of restoration zones, priorities and strategies
- Field surveys
 - Vegetation mapping
 - Surface water and soil assessment

Site Restoration Plan

- Botanical inventory
- Map of planting zones
- Recommendations for each restoration zone
 - Plant mix – species, density,
 - Restoration methods, source material
 - Plant requirements – tolerances for salinity, shade, water
 - Cattle exclusion
 - Weed management

CLARK COUNTY VIRGIN RIVER UNIT 1 INITIAL PHASE

Ecohydrological Assessment

- Reach- and site-scale assessment
- Relative elevation mapping
- Vegetation canopy height
- GIS analysis for identification of restoration zones, priorities and strategies
- Field surveys
 - Vegetation mapping
 - Surface water and soil assessment

Site Restoration Plan

- Botanical inventory
- Map of planting zones
- Recommendations for each restoration zone
 - Plant mix – species, density,
 - Restoration methods, source material
 - Plant requirements – tolerances for salinity, shade, water
 - Cattle exclusion
 - Weed management

Virgin Valley: Mormon Mesa Reach

Active channel frequency (5 year scenario)

- <20%
- 20 - 40%
- 40 - 60%
- 60 - 80%
- >80%

Active channel frequency (3 year scenario)

- >70%
- 30-70%
- <30%

Potential priority areas for active restoration

- Existing/proposed restoration site
- Public ownership

Southwestern willow flycatcher habitat

- past occupancy
- 2011 occupancy

Rock wall

Existing erosion protection

River structure

© 2013 Google

Active Channel Frequency: Flood Reset Zone

Active channel frequency (5 year scenario)

- <20%
- 20 - 40%
- 40 - 60%
- 60 - 80%
- >80%

Active channel frequency (3 year scenario)

- >70%
- 30-70%
- <30%

Potential priority areas for active restoration

- Existing/proposed restoration site
- Public ownership

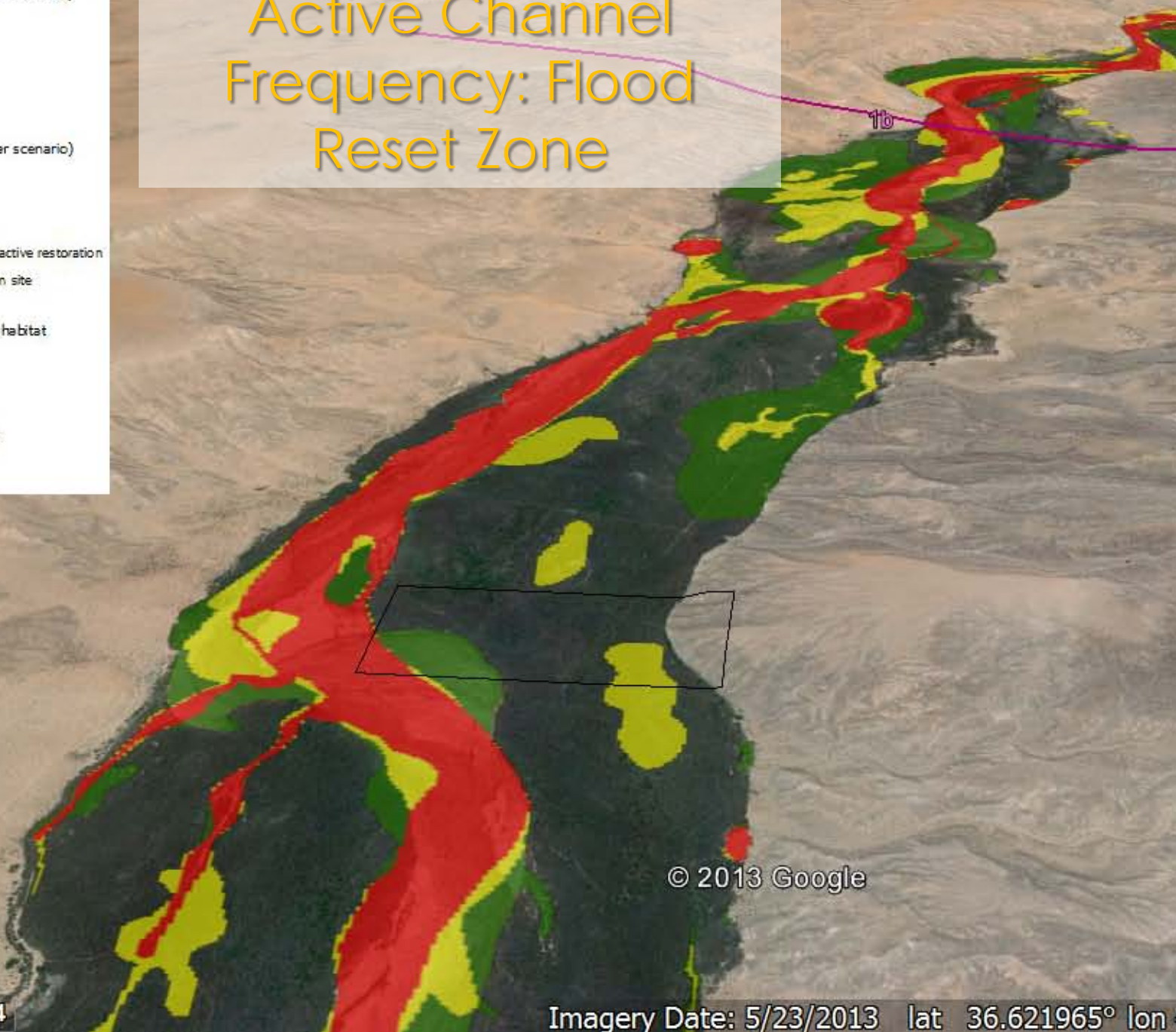
Southwestern willow flycatcher habitat

- past occupancy
- 2011 occupancy

Rock wall

Existing erosion protection

River structure



© 2013 Google

Phase 1 Potential Restoration Areas

Active channel frequency (5 year scenario)

- <20%
- 20 - 40%
- 40 - 60%
- 60 - 80%
- >80%

Active channel frequency (3 year scenario)

- >70%
- 30-70%
- <30%

Potential priority areas for active restoration

Existing/proposed restoration site

Public ownership

Southwestern willow flycatcher habitat

past occupancy

2011 occupancy

Rock wall

Existing erosion protection

River structure

© 2013 Google

Recently Occupied SWFL Habitat

Active channel frequency (5 year scenario)

- <20%
- 20 - 40%
- 40 - 60%
- 60 - 80%
- >80%

Active channel frequency (3 year scenario)

- >70%
- 30-70%
- <30%

Potential priority areas for active restoration

Existing/proposed restoration site

Public ownership

Southwestern willow flycatcher habitat

past occupancy

2011 occupancy

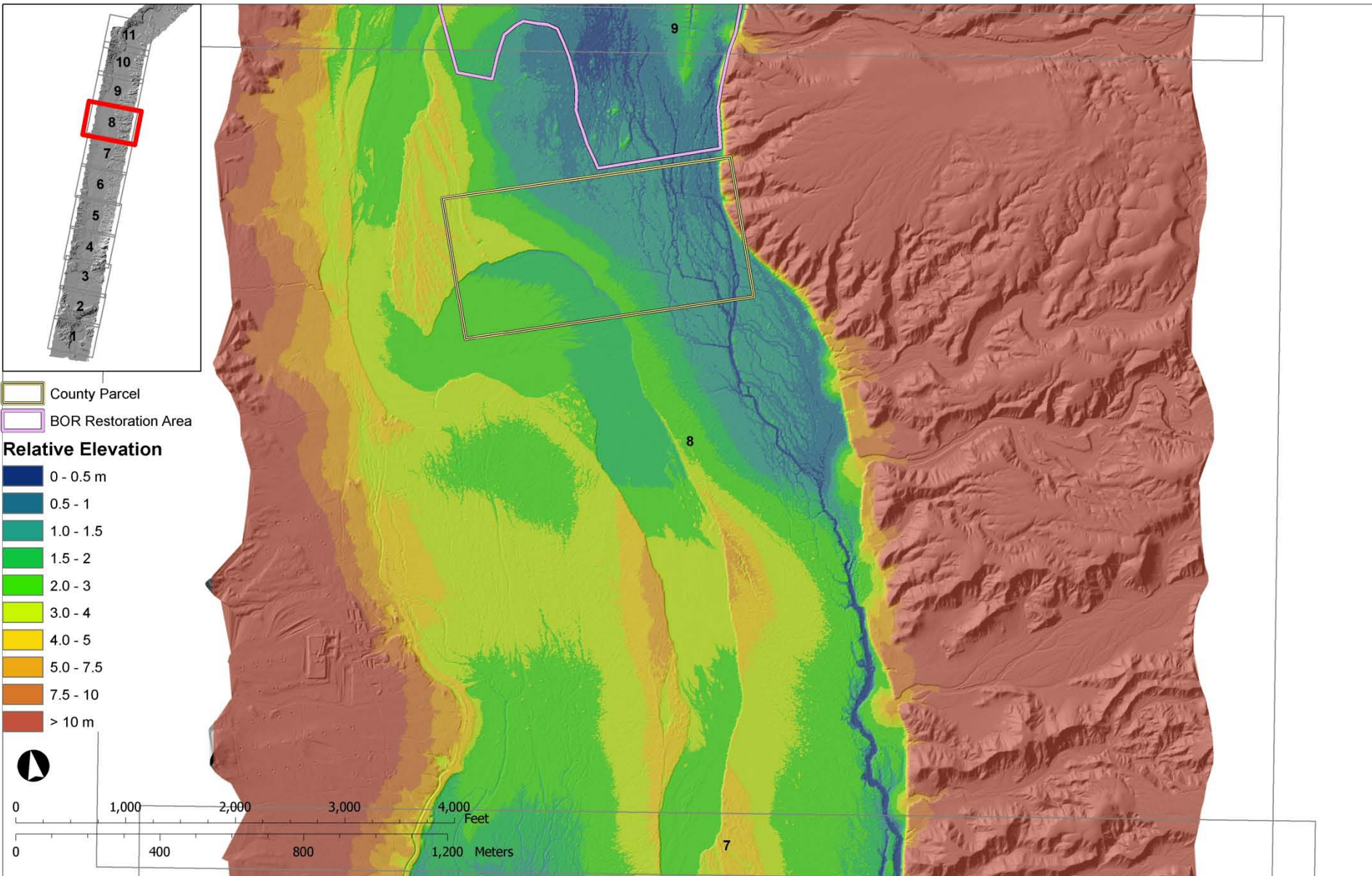
Rock wall

Existing erosion protection

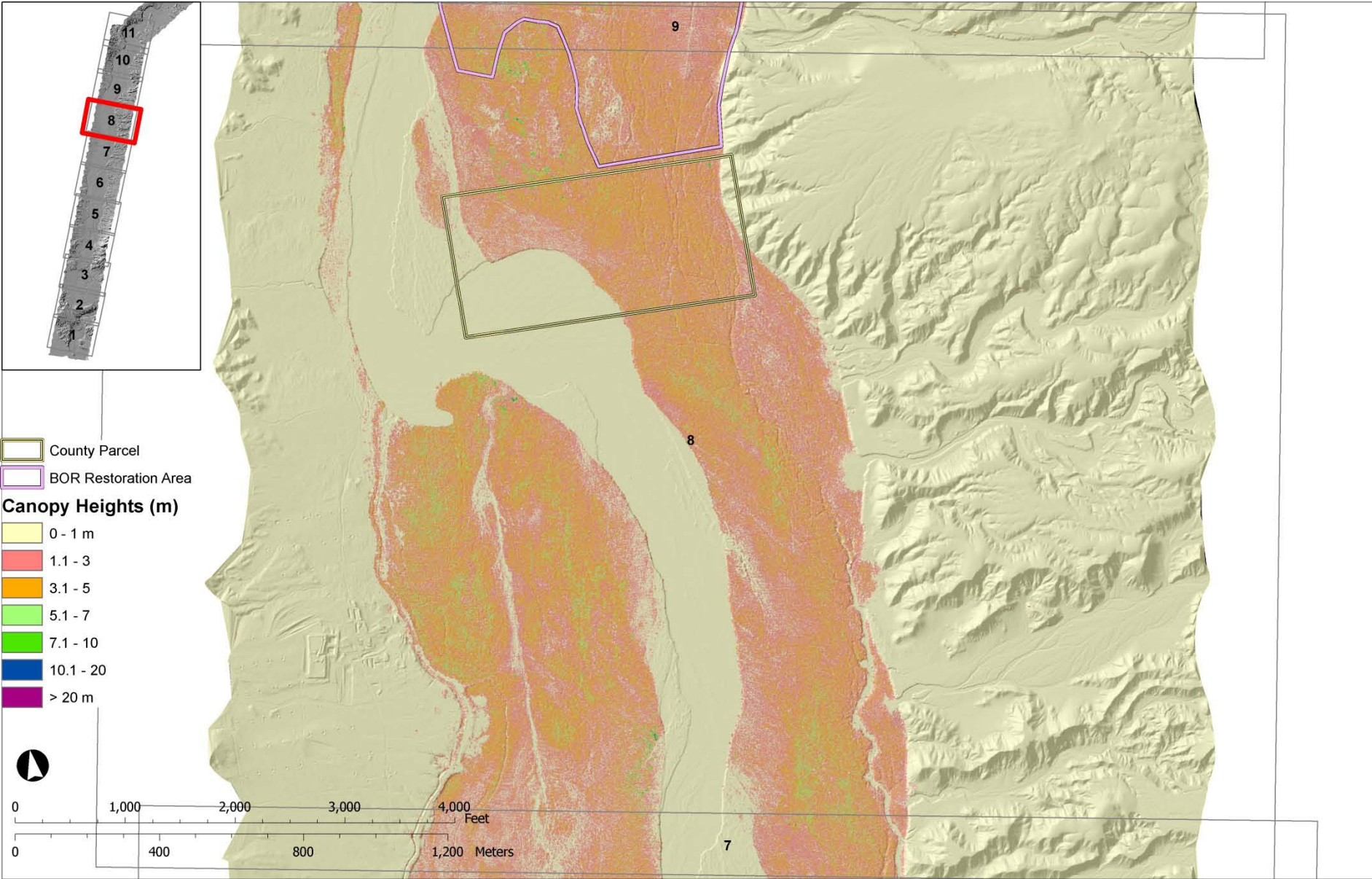
River structure

© 2013 Google

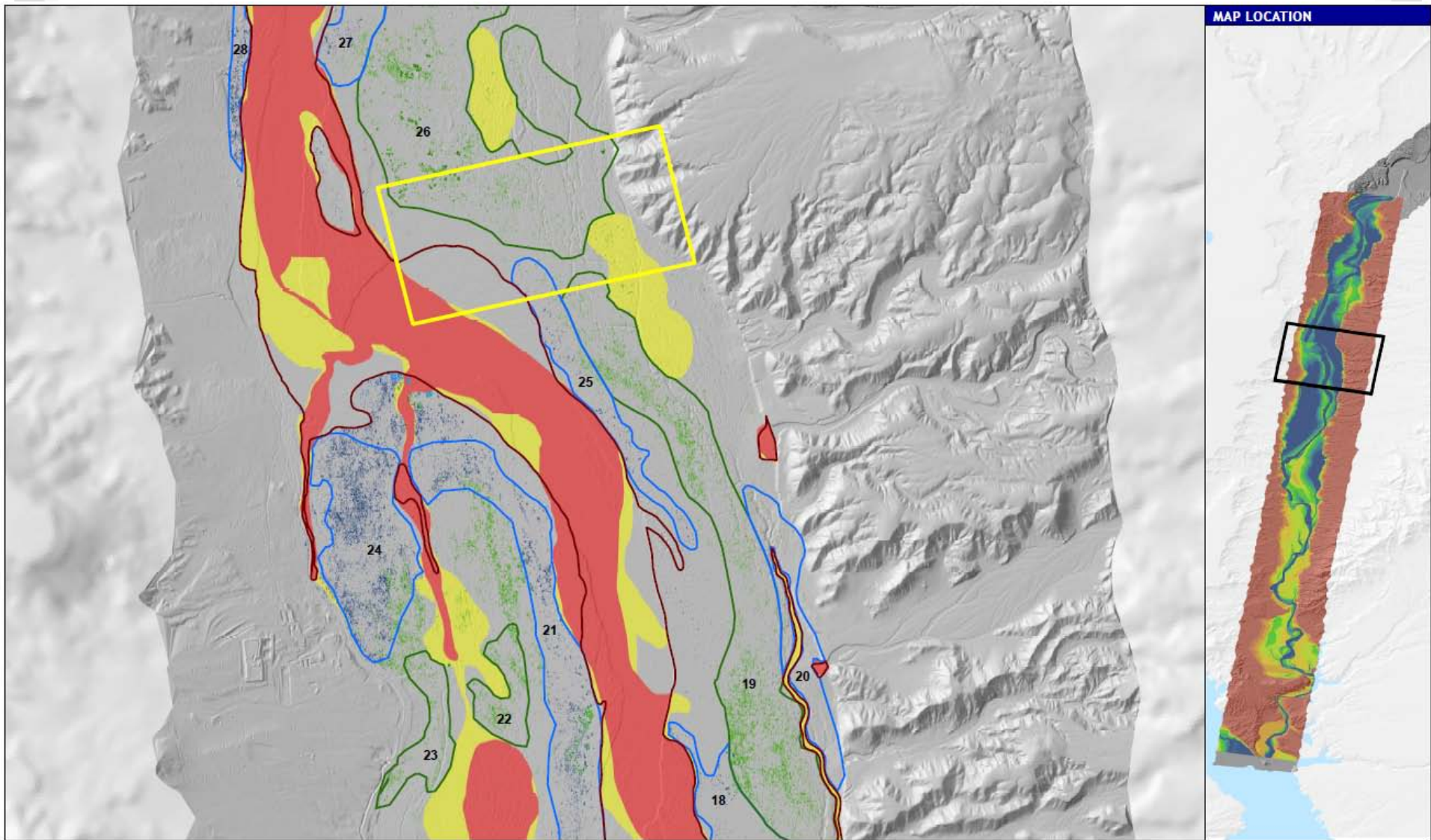
RELATIVE ELEVATION



VEGETATION CANOPY HEIGHT

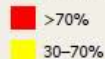


RESTORATION PRIORITY AREAS



VEGETATION RESTORATION PRIORITY

Flood Scour Frequency

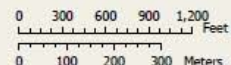


2011 Active Channel

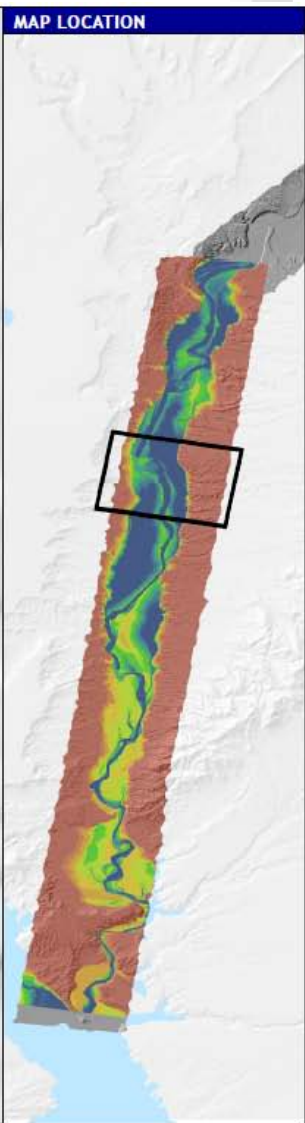
Restoration Categories



Restoration Priority Areas



Map Location



Restoration Potential

High

Medium

1994

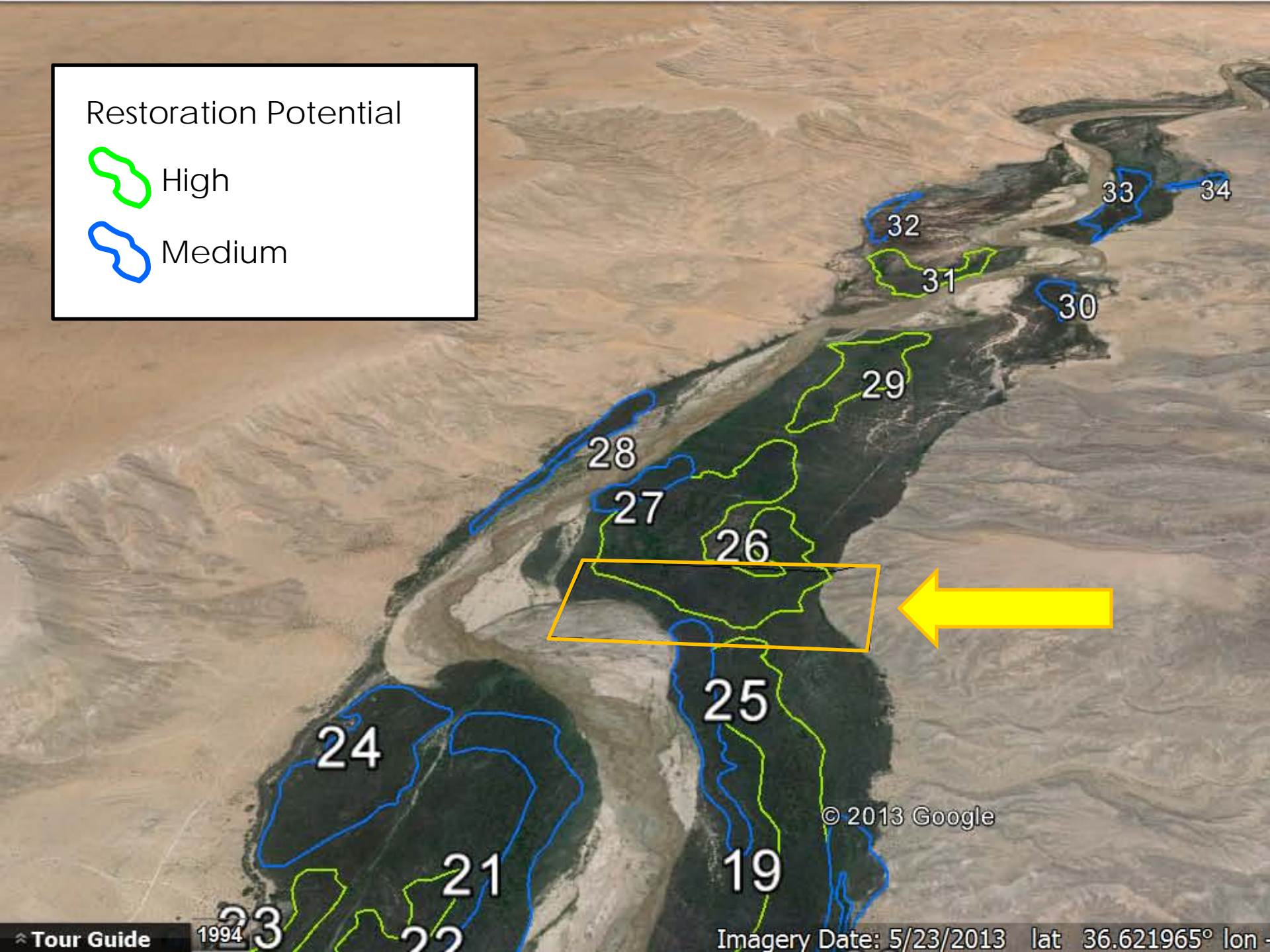
© 2013 Google

Imagery Date: 5/23/2013 lat 36.621965° lon -

Restoration Potential

 High

 Medium



© 2013 Google

SITE RESTORATION PLAN

Ecohydrological Assessment

- Reach- and site-scale assessment
- Relative elevation mapping
- Vegetation canopy height
- GIS analysis for identification of restoration zones, priorities and strategies
- Field surveys
 - Vegetation mapping
 - Surface water and soil assessment

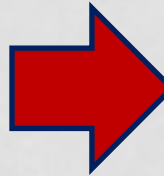
Site Restoration Plan

- Botanical inventory
- Map of planting zones
- Recommendations for each restoration zone
 - Plant mix – species, density,
 - Restoration methods, source material
 - Plant requirements – tolerances for salinity, shade, water
 - Cattle exclusion
 - Weed management

SITE RESTORATION PLAN

Ecohydrological Assessment

- Reach- and site-scale assessment
- Relative elevation mapping
- Vegetation canopy height
- GIS analysis for identification of restoration zones, priorities and strategies
- Field surveys
 - Vegetation mapping
 - Surface water and soil assessment



Site Restoration Plan

- Botanical inventory
- Map of planting zones
- Recommendations for each restoration zone
 - Plant mix – species, density,
 - Restoration methods, source material
 - Plant requirements – tolerances for salinity, shade, water
 - Cattle exclusion
 - Weed management

EXISTING CONDITIONS

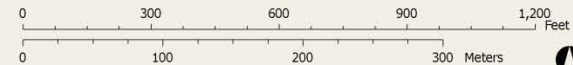


MAP 2. MORMON MESA, VIRGIN RIVER: NOVEMBER 2011 COLOR IMAGERY



Data sources:
Color Imagery: Utah State University, 2011
LIDAR Hillshade: Utah State University, 2011
Hillshade Tint (Inset) Natural Earth, 2010
States, Parks, Roads, Cities, Water Bodies: ESRI, 2010

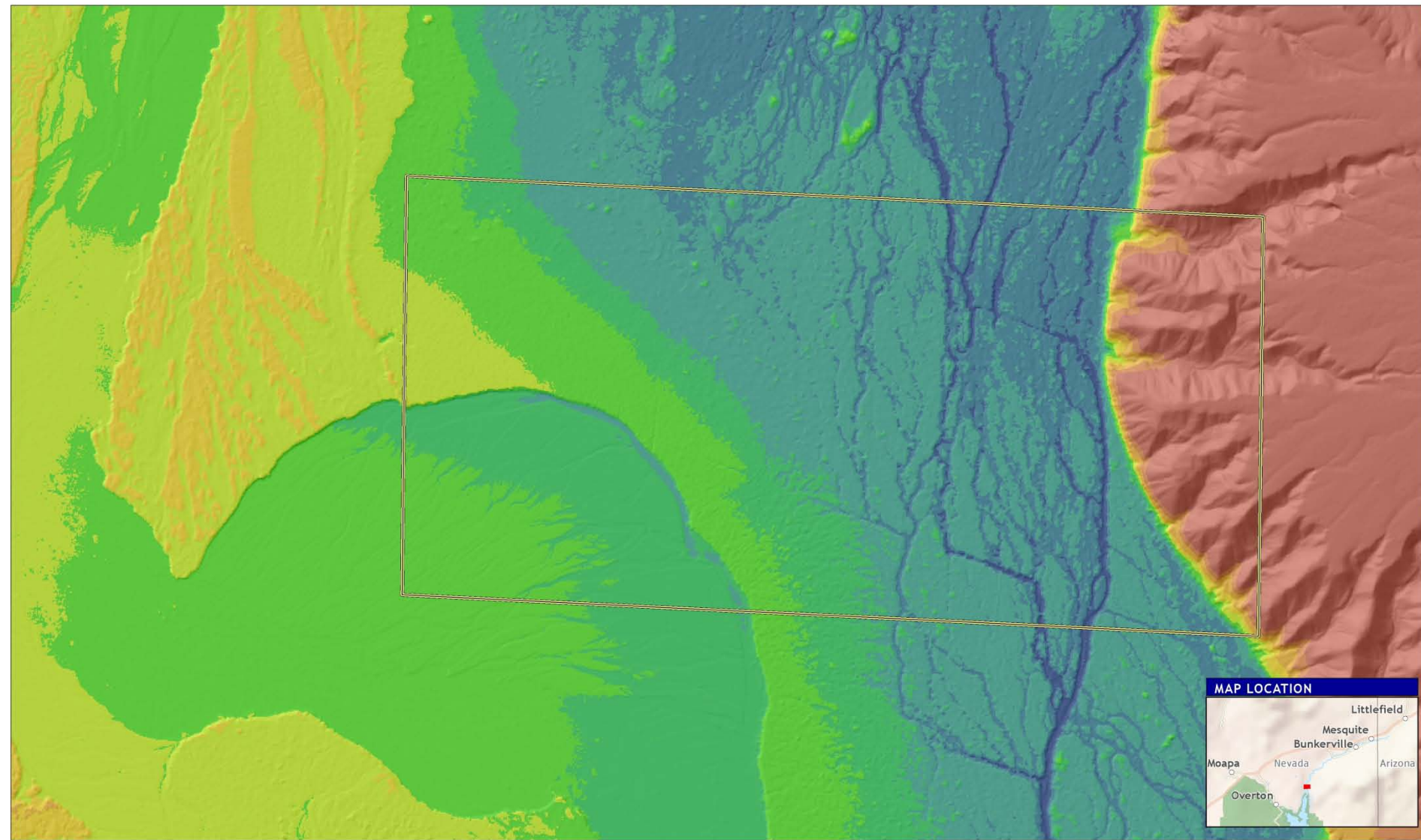
 CountyParcel_Boundary



SITE SURVEYS

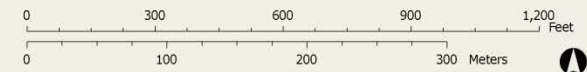
- September 2013 - UCSB Field Surveys
 - Vegetation composition and structure
 - Surface water and soil moisture
 - Soil texture, salinity, and pH
 - Site access routes
 - Field validation of remote sensing/GIS data
- October 2013 – GBI Field Reconnaissance
 - Refine site access and other logistics
 - Refine site plan for 2013/2014 priority areas
 - Set priorities for initial tamarisk clearing and treatment

FLOODPLAIN RELATIVE ELEVATION



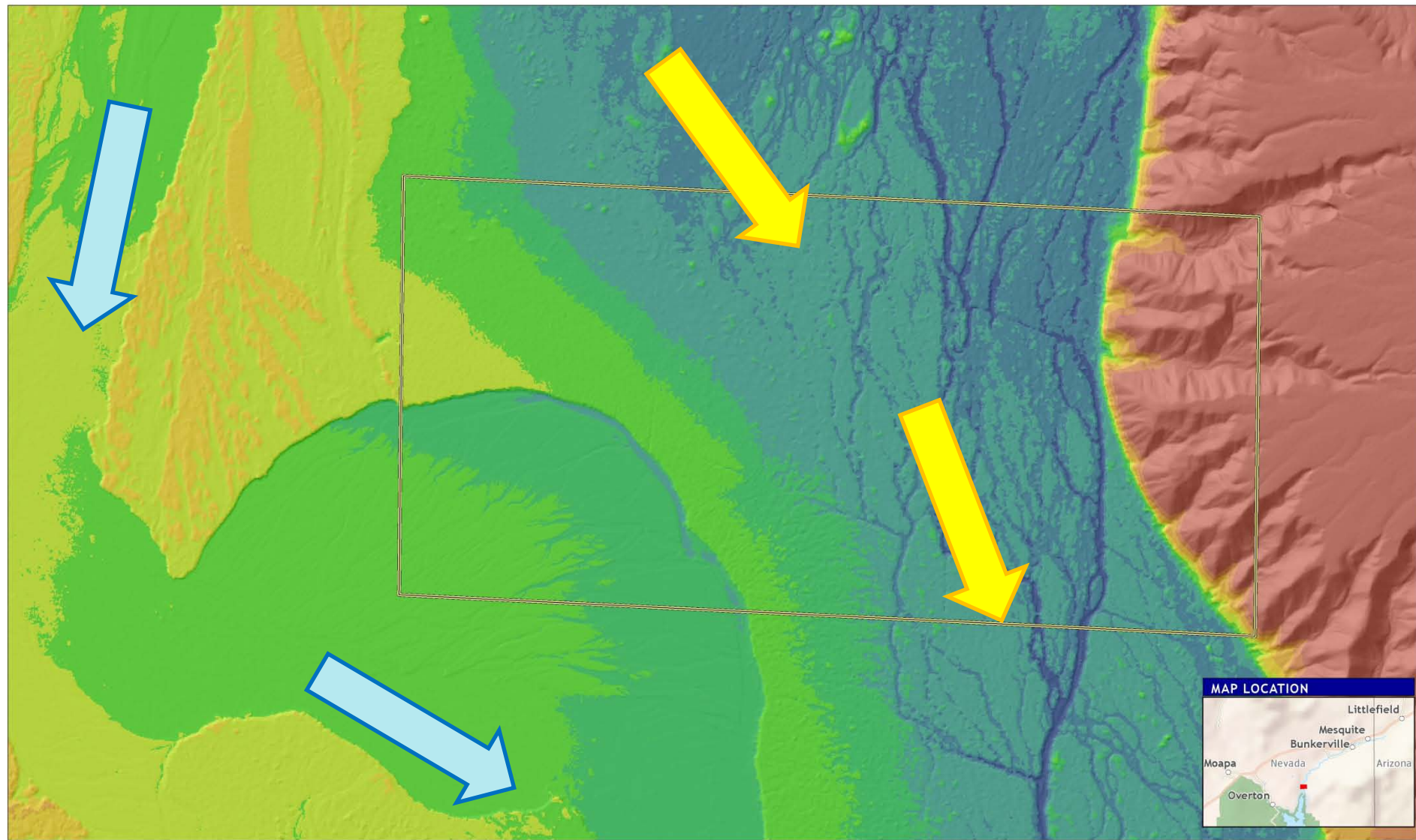
MAP 3. MORMON MESA, VIRGIN RIVER: RELATIVE ELEVATION

Relative Elevation (m)	
0 - 0.5 m	1.0 - 1.5
0.5 - 1	1.5 - 2
2.0 - 3	3.0 - 4
3.0 - 4	4.0 - 5
5.0 - 7.5	7.5 - 10
> 10 m	CountyParcel_Boundary

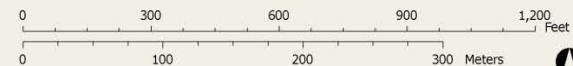
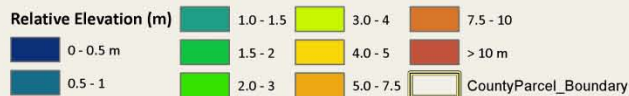


Data sources:
Relative Elevation: Stillwater Sciences, 2013
LIDAR Hillshade: Utah State University, 2011
Hillshade Tint (Inset) Natural Earth, 2010
States, Parks, Roads, Cities, Water Bodies: ESRI, 2010

SURFACE & SHALLOW GROUNDWATER



MAP 3. MORMON MESA, VIRGIN RIVER: RELATIVE ELEVATION

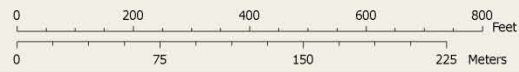


VEGETATION MANAGEMENT UNITS



MAP 5. MORMON MESA, VIRGIN RIVER: VEGETATION MANAGEMENT UNITS

- Wet Side Channels Observed
- Vegetation Management Units
- CountyParcel_Boundary



Data sources:
Vegetation Management Units: Stillwater Sciences, 2013
Color Imagery: Utah State University, 2011LIDAR
LIDAR Hillshade: Utah State University, 2011
Hillshade Tint (inset) Natural Earth, 2010

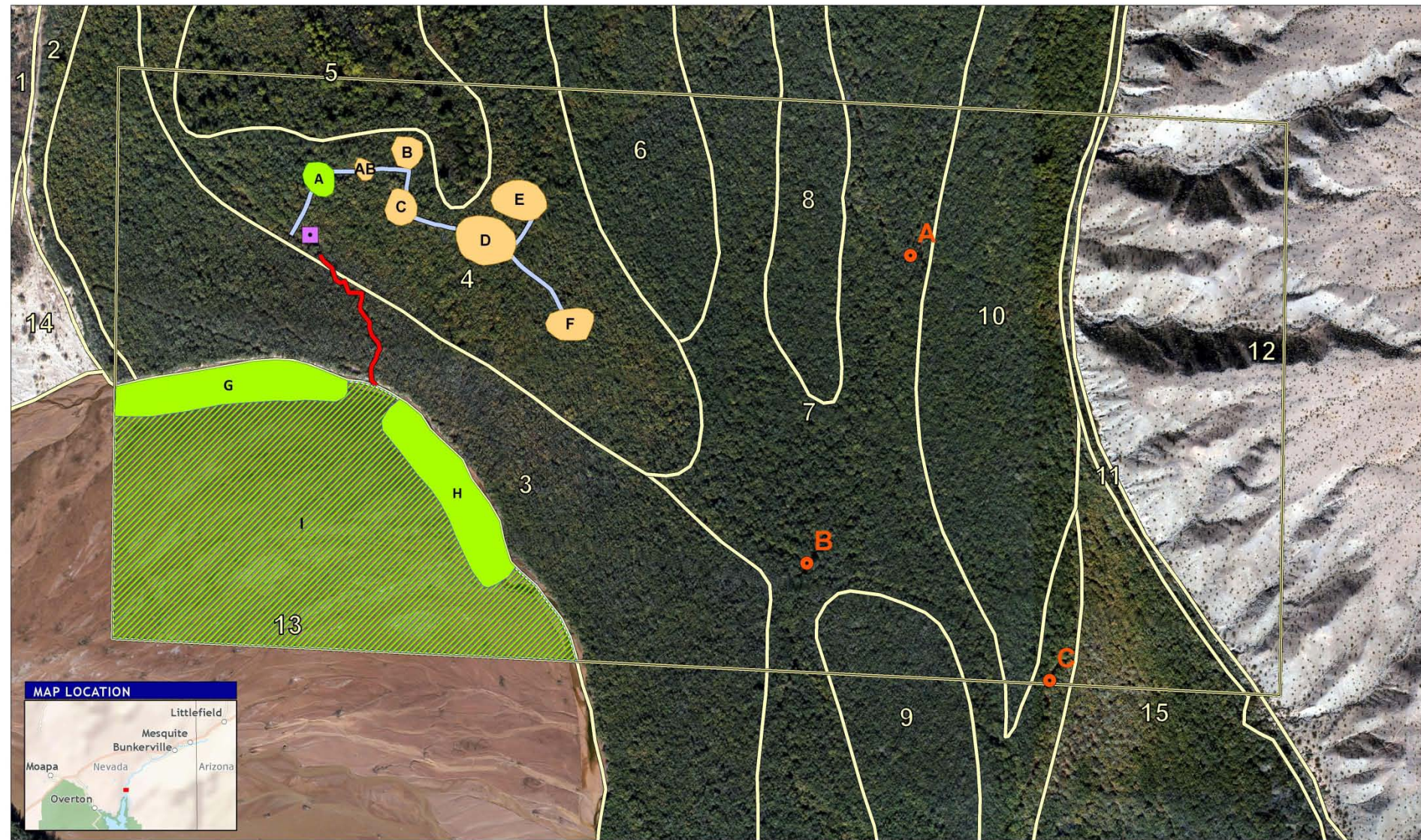
CHALLENGE: HOW TO KEEP OUT CATTLE?



BUILD A WALL OF TAMARISK!

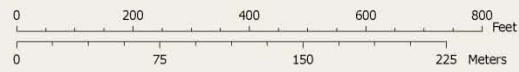


INITIAL PLANTING AREAS



MAP 6 . MORMON MESA, VIRGIN RIVER: PROPOSED REVEGETATION SITES

- Proposed Revegetation Sites
- Revegetation Sites -Cleared
- Natural Recruitment Zone
- Site Paths
- Access Path
- Launch Point
- CountyParcel_Boundary
- Vegetation Management Units
- Wet Side Channels Observed



Data sources:
Vegetation Management Units: Stillwater Sciences, 2013
Elev: Stillwater Sciences, UCSB, Great Basin Institute, 2013
Site Paths and Launch Point: UCSB, 2013
Color Imagery: Utah State University, 2011 LIDAR
LIDAR Hillshade: Utah State University, 2011
Hillshade Tint (Inset): Natural Earth, 2010

PATCH D: OCTOBER 2013



PATCH F: 13 FEB 2014



PATCH G: 13 FEB 2014



IMPLEMENTATION OF PLANTING PLAN

Cleared and Treated Tamarisk (completed)

- Path to 7 locations
- 6 planting areas
- Created cattle exclusion
- Oct 2013 - Jan 2014
- Great Basin Institute
- Walton Family Foundation

Revegetation Initial Phase (in progress)

- Winter/Spring 2014
- Collect and plant willow and cottonwood poles and cuttings
- Plant native understory species
- Install fencing
- Weed control
- Monitoring, experimental plantings, and adaptive learning for later phases

FOR ADDITIONAL INFORMATION...

Bruce Orr

bruce@stillwatersci.com

Tom Dudley

thomas.dudley@ucsb.edu

Liz Bickmore

bickmore@clarkcountynv.gov

Stillwater Sciences Website

www.stillwatersci.com

Virgin River Science Team

http://rivrlab.msi.ucsb.edu/VR_data/virginriver.php



EXTRA SLIDES

Propagule Islands Restoration Strategy

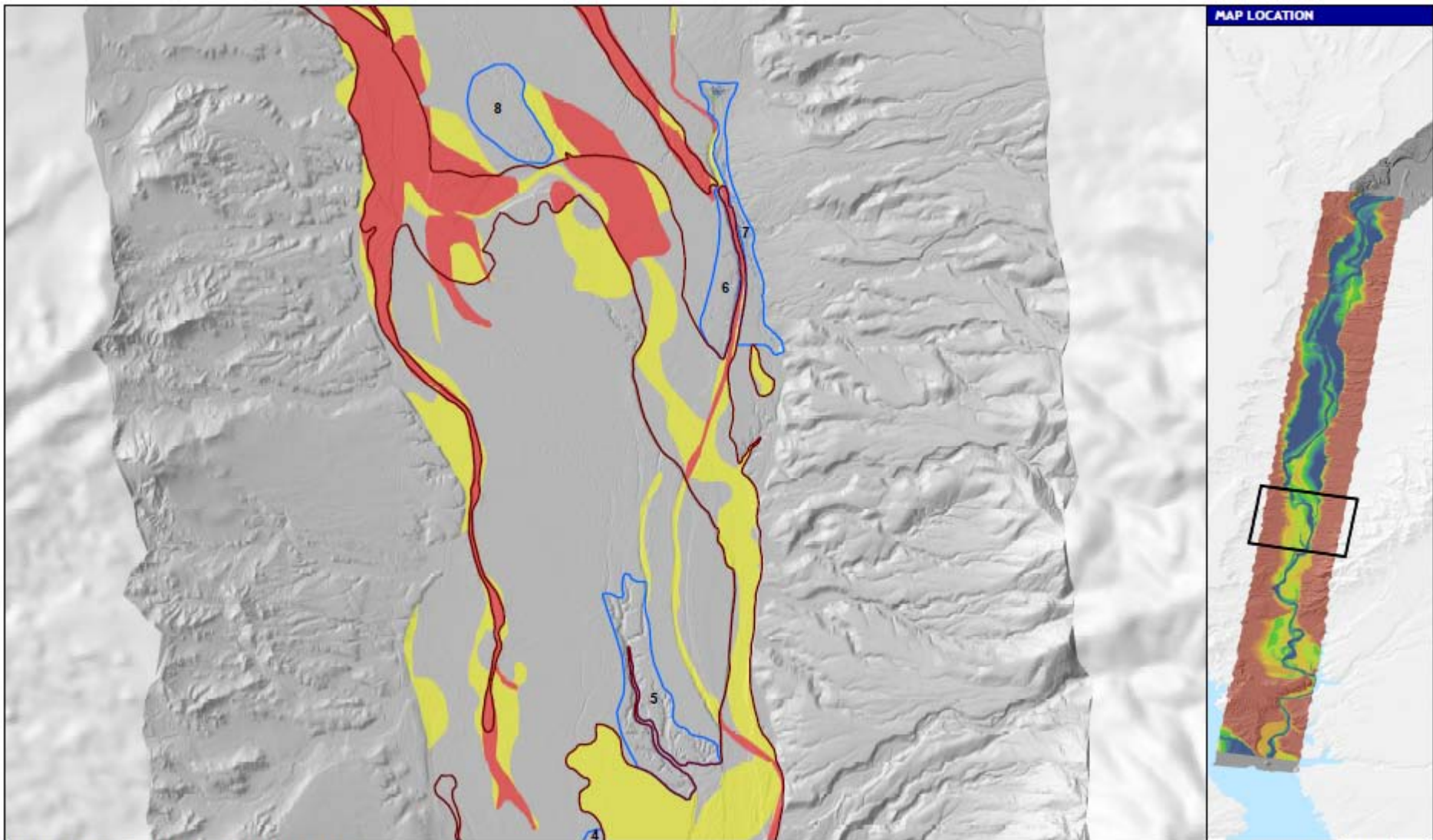


Restoration
Islands



08/09/2010 13:38

RESTORATION PRIORITY AREAS



VEGETATION RESTORATION PRIORITY

Flood Scour Frequency

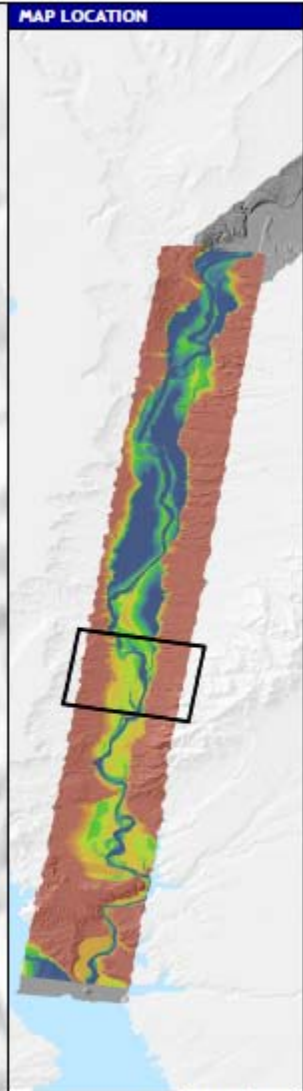
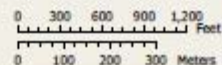
- >70%
- 30-70%
- 2011 Active Channel

Restoration Categories

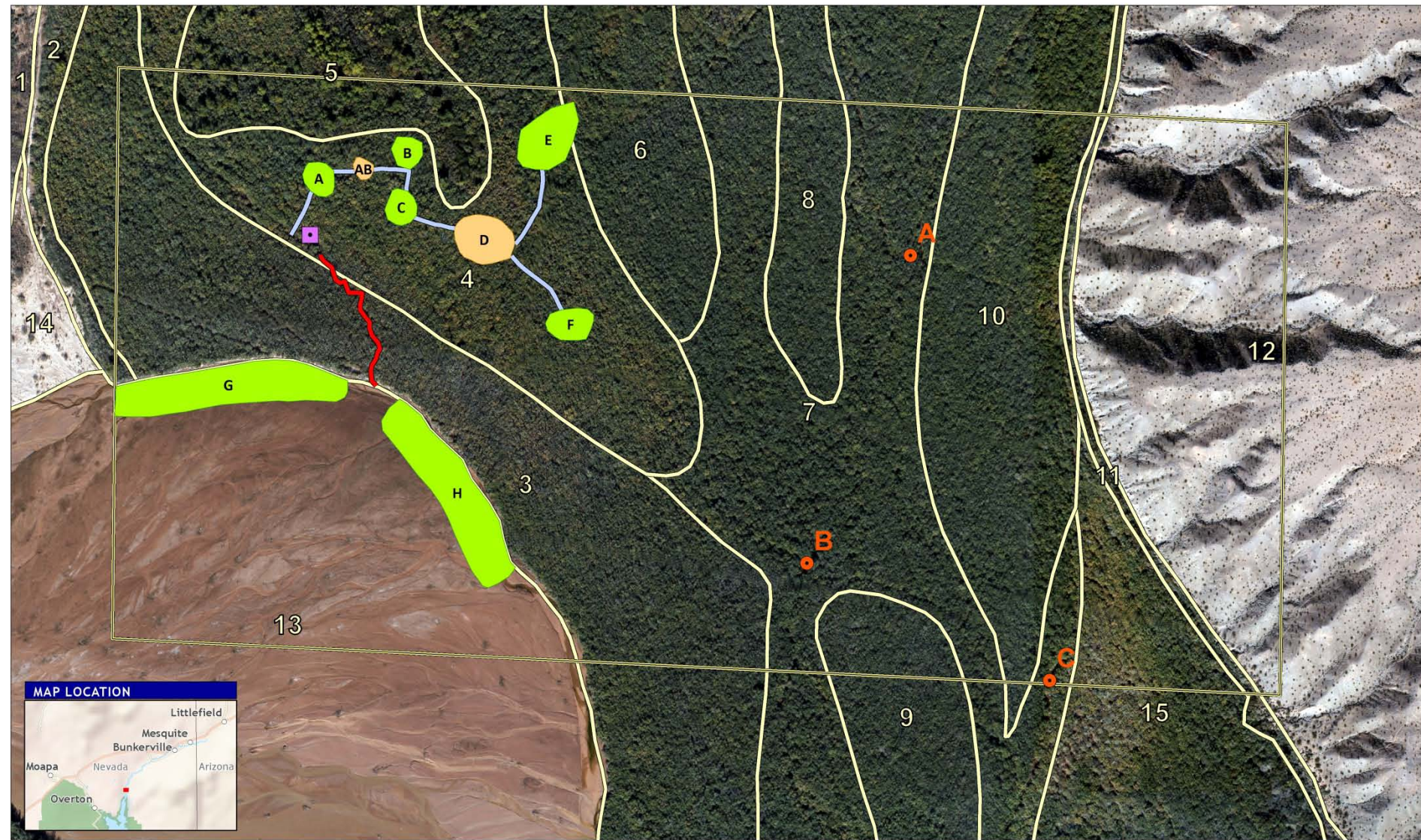
- High-1
- High-3
- High-2
- Medium-2
- Medium-1
- Medium-3
- Low

Restoration Priority Areas

- High
- Medium

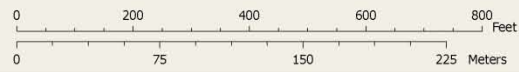


INITIAL PLANTING AREAS



MAP 6 . MORMON MESA, VIRGIN RIVER: PROPOSED REVEGETATION SITES

- Launch Point
- Site Paths
- Wet Side Channels Observed
- Proposed Revegetation Sites -Cleared
- Access Path
- Vegetation Management Units
- Proposed Revegetation Sites
- CountyParcel_Boundary



Data sources:
 Vegetation Management Units: Stillwater Sciences, 2013
 Sites: Stillwater Sciences, UCSB, Great Basin Institute, 2013
 Site Paths and Launch Point: UCSB, 2013
 Color Imagery: Utah State University, 2011 LIDAR
 LIDAR Hillshade: Utah State University, 2011
 Hillshade Tint (Inset): Natural Earth, 2010